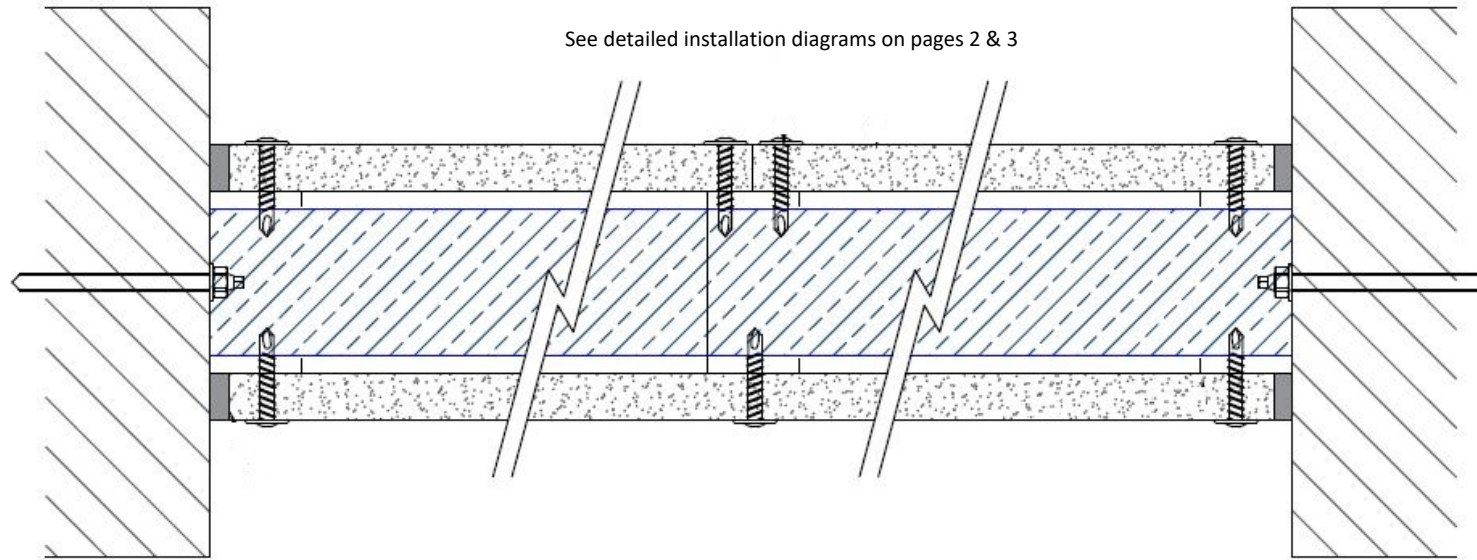




FIRESTOP CENTRE

Authorised New Zealand Distributor
Ph (09) 483 4000 www.firestopcentre.co.nz

Protecta FR Board - Naked Wall using Steel Studs FRR -/60/60



FireTS Lab

Test Report AR24015 Page 5
AS1530.4-2014 AS4072.1-2005

System ID# FC393

Products	Protecta FR Board Protecta FR Acrylic
Application	Fire stopping of naked wall (non-load bearing)
Construction	Wall comprised of steel studs, 60mm Protecta FR Board and single layer of 13mm standard plasterboard each side

Fire & Smoke Classification

Non-load bearing naked wall constructed as per diagrams on pages 2 & 3
Steel studs fitted with 60mm 2-sided Protecta FR Board with Protecta FR Acrylic sealant. Lined with single layer 13mm Standard plasterboard each side with joints offset.

FRR -/60/60

Installation Instructions

1. Fix head / base tracks and end studs according to details on page 2 & 3. Standard 64mm studs may be used provided the open section of the C-stud profile allows for the insertion of 60mm Protecta FR Board without undue damage to the board. Otherwise, use the next size up.
2. Fit the first sections of Protecta FR Board into the open C-section of the end stud. Protecta FR Acrylic sealant must be applied to the horizontal joints but can optionally be applied to the face fitted into the C-section. The adhesion provided by the sealant will help hold the boards in place. Sealant should be applied to the edge of the board in two 5mm beads approx 10mm from each face of the board.
3. With the first section of wall in place, apply sealant the entire height of the exposed edge and then friction fit the next stud ensuring good contact between the back of the C-stud and the edge of the board.
4. Continue in this manner for the rest of the wall. The horizontal joints should be staggered as shown on page 2.
5. Fix plasterboard sheets to each side of the wall (minimum 12.5mm Standard) with joints offset as shown on page 3. Finally, fill all gaps between the plasterboard and the surrounding construction with Protecta FR Acrylic sealant to the depth of the plasterboard.



Protecta®

Sheet size: A4	Drawn date & no: 20/4/24
--------------------------	-----------------------------



FIRESTOP CENTRE

Authorised New Zealand Distributor
Ph (09) 483 4000 www.firestopcentre.co.nz

Protecta FR Board - Naked Wall
using Steel Studs - FRR -/60/60

ELEVATION

Head Track and end studs
fixed to surrounding
construction using $\geq 60\text{mm}$
long suitable screws, 50mm
in from corners @ $\leq 600\text{mm}$
centres

Galvanised Steel
'U' Channel Head
Track

Protecta FR Acrylic
used as adhesive at
horizontal joints and
where boards abut
rear of C studs

Single layer of
60mm Protecta FR
Board 2-S friction
fitted & staggered
within cavity

Galvanised Steel
'C' Stud, friction
fitted between head
and base tracks

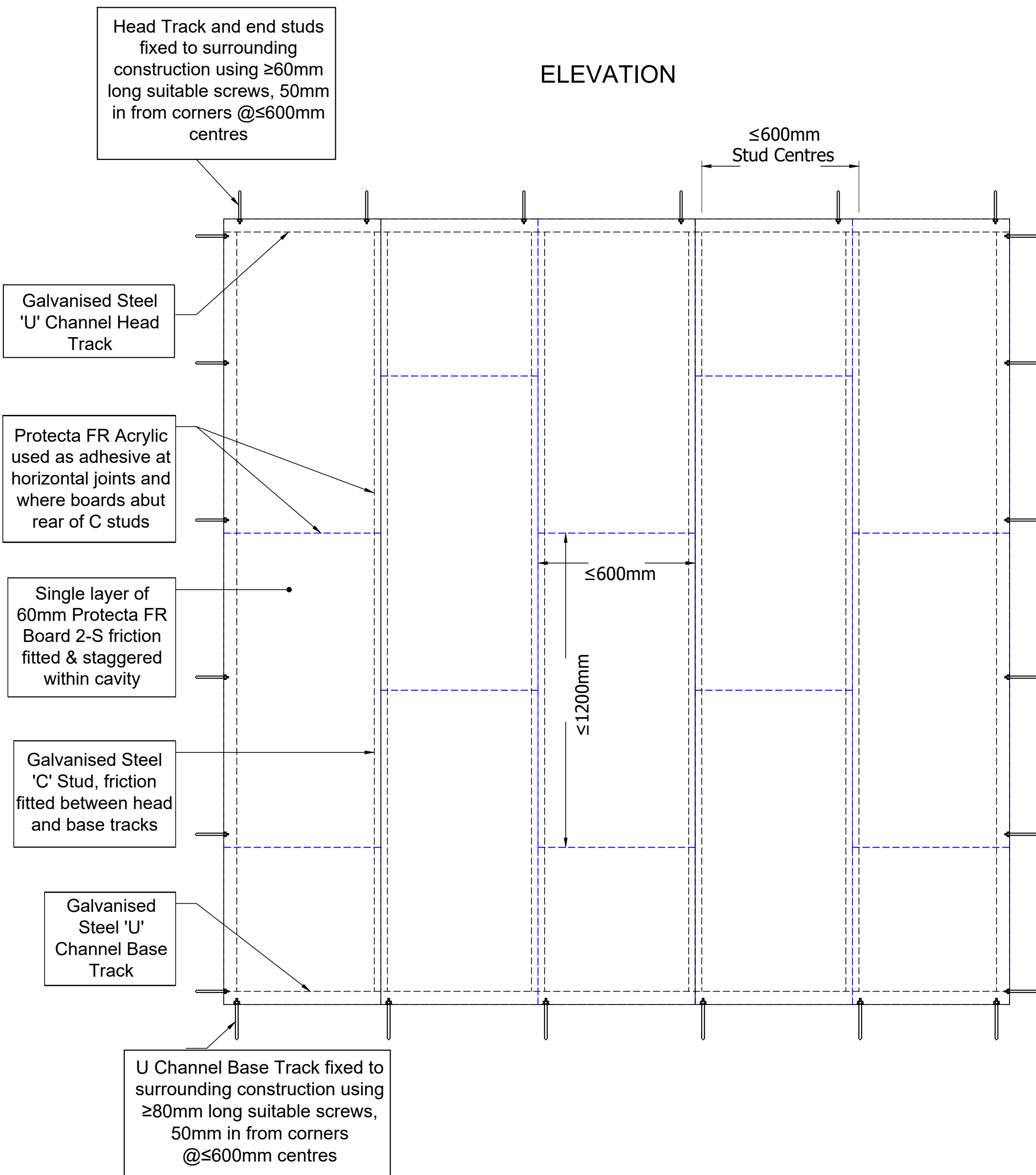
Galvanised
Steel 'U'
Channel Base
Track

U Channel Base Track fixed to
surrounding construction using
 $\geq 80\text{mm}$ long suitable screws,
50mm in from corners
@ $\leq 600\text{mm}$ centres

$\leq 600\text{mm}$
Stud Centres

$\leq 600\text{mm}$

$\leq 1200\text{mm}$





FIRESTOP CENTRE

Authorised New Zealand Distributor
Ph (09) 483 4000 www.firestopcentre.co.nz

Protecta FR Board - Naked Wall using Steel Studs - FRR -/60/60

